



UNIVERSITY OF MARYLAND

admissions.umd.edu | ApplyMaryland@umd.edu | 301.314.TERP (8377)





DISTINCTIONS

NO. **20**

AMONG PUBLIC UNIVERSITIES
IN U.S. NEWS & WORLD REPORT'S
UNDERGRADUATE RANKINGS

4,250

INTERNATIONAL
STUDENTS

47%

UNDERGRAD
STUDENTS
OF COLOR

800+

CLUBS AND ORGANIZATIONS

10TH

IN KIPLINGER'S
PERSONAL FINANCE
MAGAZINE'S "100
BEST VALUES AMONG
PUBLIC COLLEGES"

MARYLAND
BY THE
NUMBERS



116

COUNTRIES OF ORIGIN
FOR STUDENTS

4,351

TOTAL FACULTY

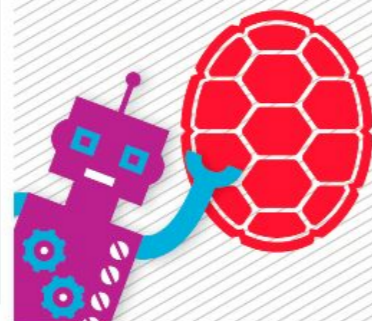
NO. **6**

AMONG PUBLIC INSTITUTIONS
IN THE CHRONICLE OF HIGHER
EDUCATION'S GRADUATION RATES

30K+ UNDERGRADUATE
STUDENTS

NO. **10**

AMONG THE PRINCETON REVIEW &
ENTREPRENEUR MAGAZINE'S
BEST UNDERGRAD PROGRAMS
FOR ENTREPRENEURS



400+

STUDY ABROAD OPTIONS

5 OUT OF **5** STARS
★ ★ ★ ★ ★

FOR LGBTQ+ INCLUSIVITY
FROM CAMPUS PRIDE INDEX

20

DIVISION I NCAA TEAMS

LOCATION

Distance from UMD Campus

Beijing
6941 miles

Seoul
6952 miles

New Delhi
7499 miles

Taipei
7870 miles

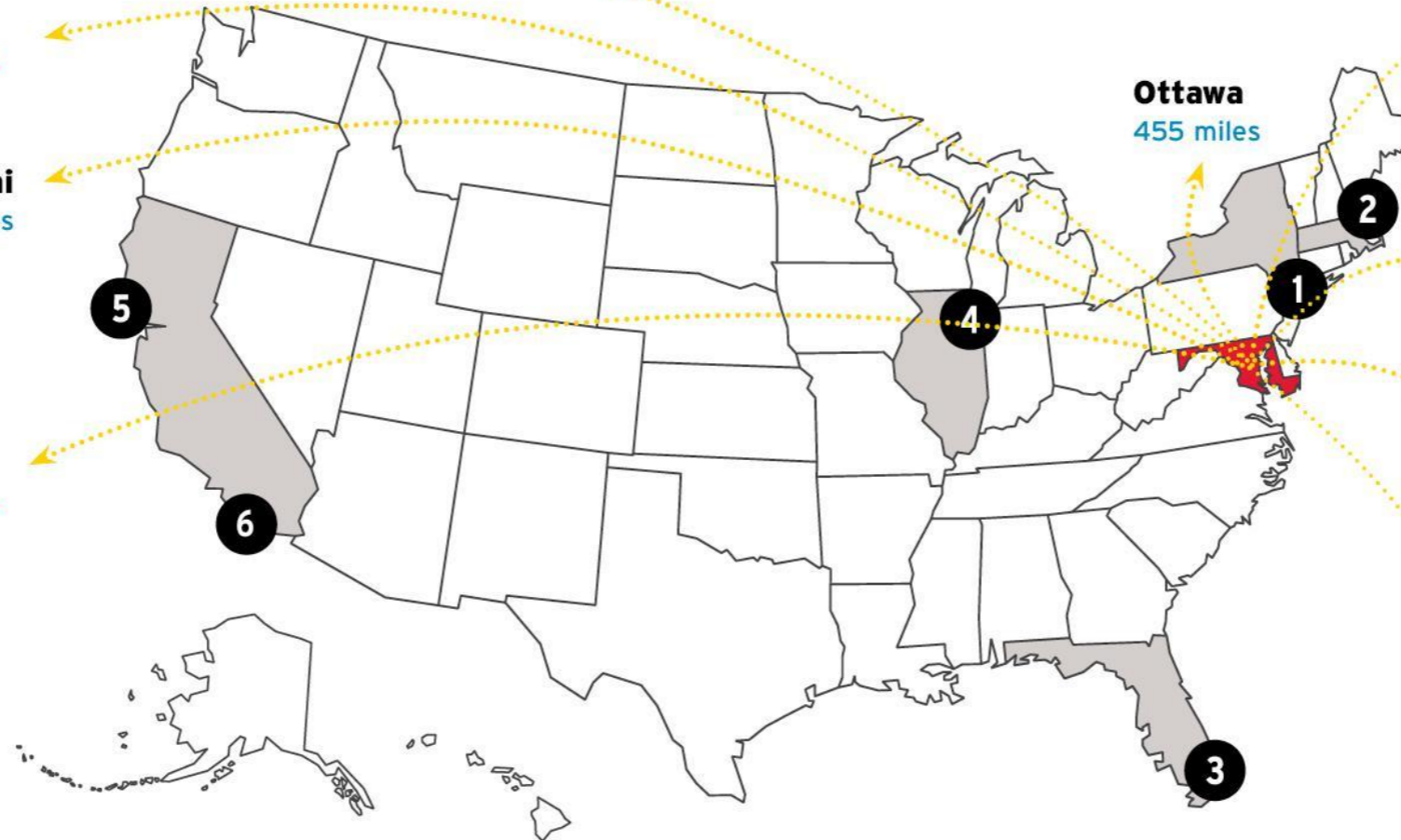
Ottawa
455 miles

London
3674 miles

Madrid
3793 miles

Istanbul
5230 miles

Abuja
5538 miles



1



NEW YORK
219 miles

2



BOSTON
432 miles

3



MIAMI
1,073 miles

4



CHICAGO
697 miles

5



SAN FRANCISCO
2,813 miles

6



LA
2,642 miles



D.C. IS CALLING

SCHOOLS, COLLEGES & MAJORS

College of Agriculture and Natural Resources

School of Architecture, Planning and Preservation

College of Arts and Humanities

College of Behavioral and Social Sciences

College of Information Studies

Robert H. Smith School of Business

College of Computer, Mathematical, and Natural Sciences

College of Education

A. James Clark School of Engineering

Philip Merrill College of Journalism

School of Public Health

School of Public Policy

Letters and Sciences



LIMITED ENROLLMENT PROGRAMS

Biochemistry
Biological Sciences
Business
Chemistry
Communication
Computer Science

Criminology & Criminal Justice
Engineering
Environmental Science*
Immersive Media Design
Neuroscience
Psychology

lep.umd.edu



SPECIAL EXPERIENCES

- Research
- Internships
- Education Abroad
- Service Learning
- Living & Learning



STUDENT LIFE

Housing & Dining / 800+ Student Organizations / Division 1

Athletics / Club & Intramural Sports / Greek Life / Vibrant

College Town / Community Service & Civic Engagement



A scenic view of a university campus. In the foreground, there is a large, well-maintained green lawn with a curved concrete border. To the right, a paved walkway leads towards a large, multi-story brick building. The building has a prominent entrance with columns and a sign that reads "BIOLOGY - PSYCHOLOGY". In the background, there are more brick buildings, including one with a distinctive white cupola on its roof. The sky is blue with scattered white clouds. A few people can be seen walking on the path. The overall atmosphere is bright and sunny.

APPLICATION PROCESS

UMD APPLICATIONS

- Dual Application Institution
 - Common App
 - StandOut Admissions Network

- Application exclusively available online

go.umd.edu/Apply



UMD APPLICATION DEADLINES

- Early Action
 - Non-binding; priority consideration for merit scholarships, special programs and admission
- Regular Decision
 - Final deadline; no special benefits or priority consideration

**UMD's early action
deadline is November 1!**



24 FACTORS

- High school achievement
- Grades in academic subjects
- Progression of performance
- Rank in class (actual or percentile)
- Written expression of ideas (essays)
- Gender
- SAT I or ACT scores
- Work experience
- Extenuating circumstances
- Recognition of special achievement
- Breadth of life experiences
- Extracurricular activities
- Special talents and skills
- Community involvement
- Community service
- Demonstrated leadership
- Academic endeavors outside the classroom
- Quality of coursework
- Residency status
- Family educational background
- Learning differences
- English as a second language/
language spoken at home
- Geographic origin

UMD APPLICATION CHECKLIST

- Application form & fee
- Letters of recommendation
 - One from a teacher; one from a counselor
- Official transcripts
- Official standardized test scores
 - SAT and/or ACT (test-optional)
 - Duolingo English Test, IELTS or TOEFL (if applicable)
- Activity list or resume
- Essay
- Terps Application Portal



FINANCING YOUR EDUCATION

- Need-Based Financial Aid
 - FAFSA becomes available on October 1
 - UMD's priority FAFSA deadline: **January 1**
 - UMD school code: **002103**
- Merit-Based Scholarships
 - Early action applicants automatically reviewed; no separate application necessary

go.umd.edu/typesofaid

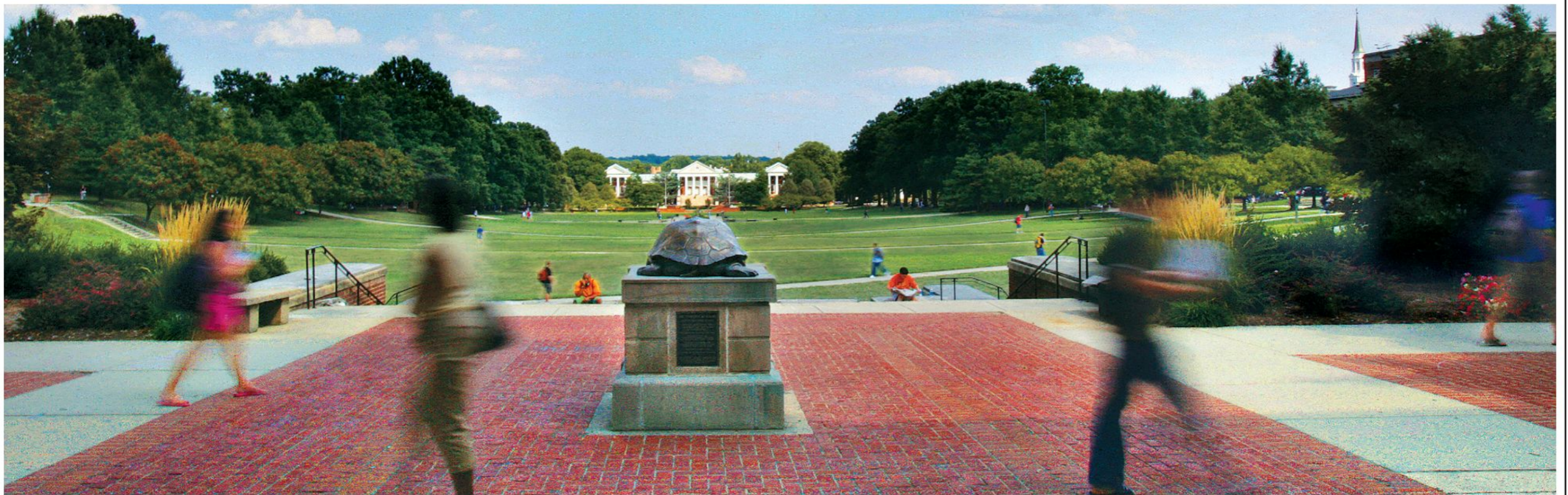


TYPES OF ADMISSION DECISIONS

Fall / Spring / Denied

Make a note of the confirmation deadline for each institution.

UMD's confirmation deadline is **May 1!**



THANK YOU

admissions.umd.edu | ApplyMaryland@umd.edu | 301.314.TERP (8377)

